

### Log Installation Step 1



**Locate driftwood logs (separate box) and bagged stones (inside unit)**

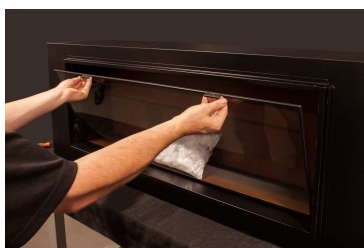
Log Configurations:  
 LFV40/15: 1-40" Log Set  
 LFV60/15: 1-60" Log Set  
 LFV80/15: 2-40" Log Sets  
 LFV100/15: 1-40" Log Set & 1-60" Log Set  
 LFV120/15: 2-60" Log Sets

### Log Installation Step 2



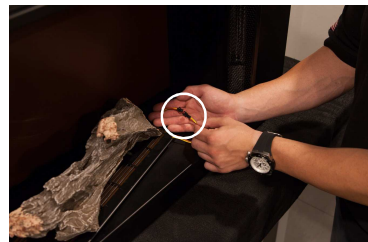
**Locate screws holding in the glass and remove**

### Log Installation Step 3



**Carefully remove glass panel by pulling on the tabs located on the left and right side of the firebox.**

### Log Installation Step 4



**Locate red and yellow wires coming off the mother board and the end of the driftwood logs. Plug in wires to each other.**

### Log Installation Step 5



**Place the driftwood logs in the center of the firebox so that it sits flush in the designated channel. Then place stone media around the logs for the coal bed look.**

### Log Installation Step 6



**Replace glass in the front of the unit where it was first removed from.**